



## Stand Alone Tong Configuration



6-1/4"-30k Tong with Stand Alone Mounting Kit  
P/N: 50.35.03.33.01  
Quantity: \_\_\_\_\_

## Tong with Backup Configuration



6-1/4"-30k Tong with Backup Mounting Kit  
P/N: 50.35.03.33.02  
Quantity: \_\_\_\_\_



7"-45k Backup  
P/N: 56.45.01.01  
Quantity: \_\_\_\_\_

## Accessories for Stand Alone Tong



Lift Cylinder Assembly  
P/N: 200276  
Quantity: \_\_\_\_\_

Tension Load Cell  
32-1/2" Handle, 45k Rated  
P/N: 19-207400-152-SPT  
Quantity: \_\_\_\_\_



Spring Hanger, 2000#  
P/N: 11.85.000.00  
Quantity: \_\_\_\_\_



Lift Cylinder Assembly  
P/N: 200276  
Quantity: \_\_\_\_\_

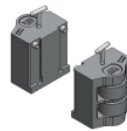
Compression Load Cell  
32-1/2" Handle, 45k Rated  
P/N: 19-207120-145-SPT  
Quantity: \_\_\_\_\_



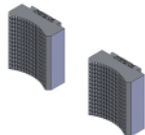
Spring Hanger, 3000#  
P/N: 11.85.000.01  
Quantity: \_\_\_\_\_

## Tong Jaw and Die Selection

TONG CRA DIE SELECTIONS			
PIPE SIZE	DIE PART NUMBER (COARSE GRIT)	AVAILABILITY	QTY. TO ORDER
2-3/8"	27A.050.019.G0	☺	
2-7/8"	27A.050.023.G0	☺	
3-1/2"	27A.050.028.G0	☺	
2-3/8" thru 3-1/2"	20.050.028.W2 KIT	☺	
☑ = AVAILABLE ; ☺ = MADE TO ORDER			
4"	27A.050.032.G0	☺	
4-1/2"	27A.050.036.G0	☺	
5"	27A.050.040.G0	☺	
5-1/2"	27A.050.044.G0	☺	
6"	27A.050.048.G0	☺	
6-1/4"	27A.050.050.G0	☺	
4" thru 6-1/4"	20.050.050.W2 KIT	☺	
☑ = AVAILABLE ; ☺ = MADE TO ORDER			



Wrap Around Tong Jaw Kit  
P/N: 20.050.028.W2 KIT  
For CRA these jaws are effective from 3-1/2" - 2-3/8"



Wrap Around Dies are sold Individually, tong requires (2) dies while backups require (3) dies.



Wrap Around Tong Jaw Kit  
P/N: 20.050.050.W2 KIT  
For CRA these jaws are effective from 6-1/4" - 4"

BACKUP CRA DIE SELECTIONS			
PIPE SIZE	DIE PART NUMBER (COARSE GRIT)	AVAILABILITY	QTY. TO ORDER
2-3/8"	27A.050.019.G0	☺	
2-7/8"	27A.050.023.G0	☺	
3-1/2"	27A.050.028.G0	☺	
2-3/8" thru 3-1/2"	23.56.004.G0 KIT	☺	
4"	27A.050.032.G0	☺	
4-1/2"	27A.050.036.G0	☺	
5"	27A.050.040.G0	☺	
5-1/2"	27A.050.044.G0	☺	
6"	27A.050.048.G0	☺	
6-1/4"	27A.050.050.G0	☺	
6-1/2"	27A.056.052.G0	☺	
6-5/8"	27A.056.053.G0	☺	
7"	27A.056.056.G0	☺	
☑ = AVAILABLE ; ☺ = MADE TO ORDER			
27A.050 and 27A.056 Die Series fit directly to 7" Backup no additional Die Carriers required.			

For complete listing of Tong Jaw Availability and Die Carrier Availability refer to "Jaw Reference Manual" available on the Starr Power Tong's Portal.